

Cambridge
Community
Heritage



LOTTERY FUNDED

Wimpole: silent voices and deserted homes

The project

Wimpole parish is first recorded in Hare's map of 1638 which shows groups of dwellings dispersed around a moated manor with a deer park. Emparkment was already underway before Sir Thomas Chicheley demolished the manor house and began construction of Wimpole Hall in 1640. Over the next 200 years, as the Hall and park grew, settlements like Bennall End and Thresham End disappeared without record, and with them the stories of the people who lived there.

Our project sought to restore their memory by exploring Wimpole Estate documents and recording surviving archaeological evidence for their existence.

Cambridge Archaeology Field Group

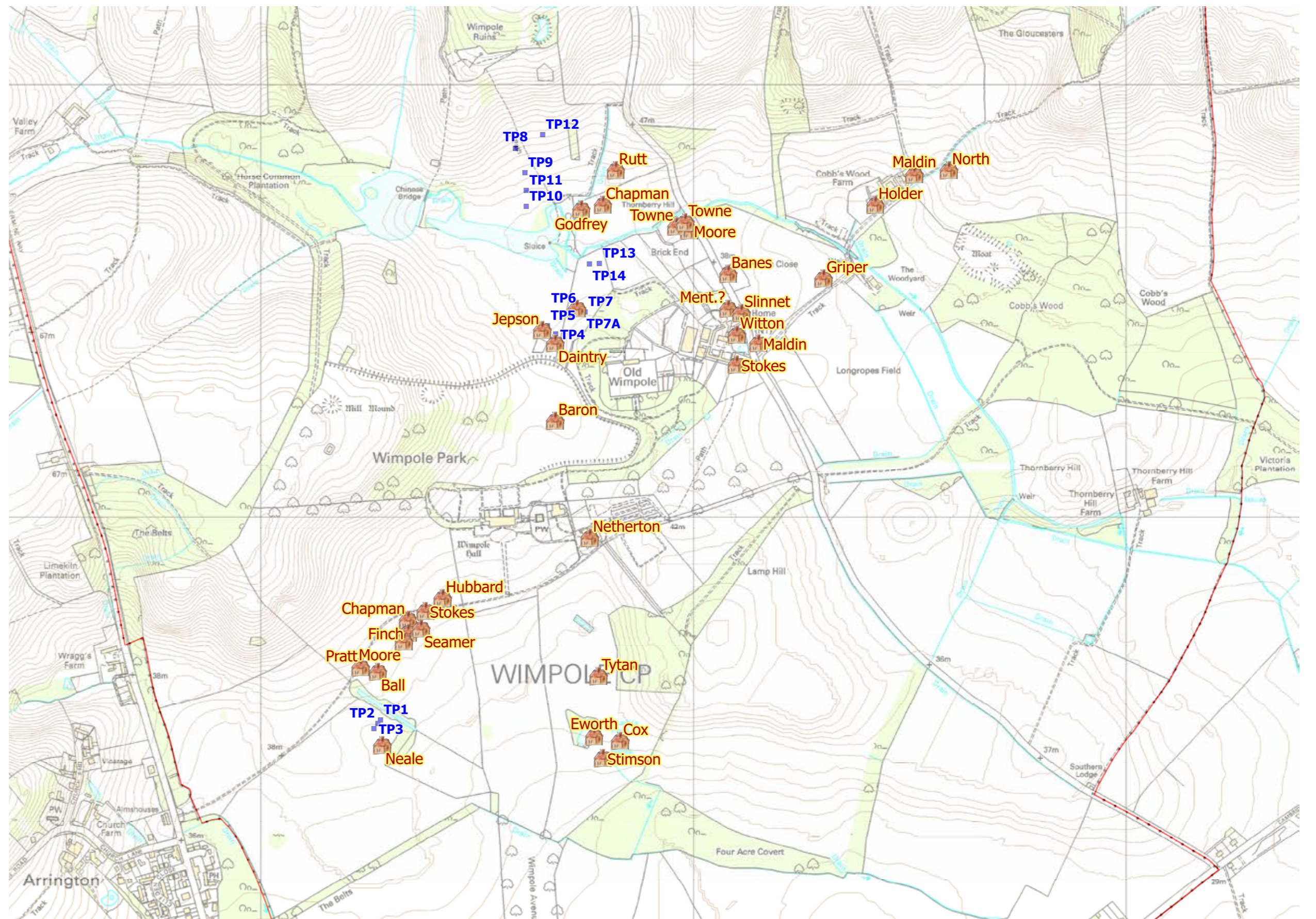
CAFG was formed in 1978 to carry out practical field archaeology in the Cambridge area. Our purpose is to contribute to the archaeological knowledge of the region through archive research and field-based activities. We regularly carry out field-walking during the autumn through to the spring periods. A website, cafg.net, is used to disseminate the information gained in the form of written articles and photographs.

We promote archaeology to the local community through attendance at history events, excavations and community test-pitting. A regular series of lectures is open to all.

The contributors

The main sponsor of this project was the Heritage Lottery Fund All our Stories grant programme which was launched to support BBC Two's *The Great British Story*. The funding was directed towards groups and communities who wished to explore and share their local heritage.

Whilst funding is of major importance this project would not have been possible without the interest and encouragement of many individuals and organisations. The support has taken the form of a willingness to give time and labour along with valuable loans of equipment. Thank you to everyone who has worked with us and given their encouragement.



Reproduced by permission of Ordnance Survey on behalf of HMSO. © Crown Copyright. All rights reserved.



The group ready for action – Cambridge Road Farm



How many pieces? – sorting out the finds



If you look closely Poster presentation at the CAS conference, Cambridge



The ice creams are over there! Visitors to the test pitting at Wimpole during the hot summer



Serious discussion of what to do next – the committee at work



You in your small hole and me in mine – volunteers helping out at the Wimpole test pits



Helpers washing the test pit finds in the tent at Wimpole



Just a few pottery finds for Paul Blinkhorn to identify